



SAFETY

EXCAVATOR S1

Breathable Leather Ankle Safety Boot

Excavator is our iconic & stylish leather safety boot, offering very high wearer comfort & highest slip resistance, thanks to its lightweight design, tropicalized high-tech materials, and ergonomically designed out sole. Excavator the ideal companion for the 24X7 working.

Upper	Apollo leather
Sole	Double Density PU Grey Outsole
Toecap	Steel
Midsole	PU
Lining	Mesh
Footbed	EVA Footbed
Safety category	EN ISO 20345 : 2011 & IS 15298 (Part 2): 2016
Sample weight	975 gm. +- 50g. Size 8.
Size range	UK 5-12

BORN TOUGH BUILT RELIABLE



GENERAL & UPPER

 DESIGN "B" ANKLE BOOT	 LEATHER UPPER	 SUPER LIGHT WEIGHT	 BREATHABLE UPPER	 LACE UP	 ODOR REDUCING
--	--	---	---	--	--


TOE CAP

 ST 200J STEEL TOE	 WIDE TOE CAP
---	---

LINING

 TEXTILE LINING

IN SOCK

 AERATION HOLES TO REGULAR TEMPERATURE	 CUSHION HEEL & ARCH SUPPORT
--	--

SOLE

 PU GREY OUTSOLE DOUBLE DENSITY	 35J HEEL SHOCK ABSORPTION	 FUEL OIL RESISTANT SOLE	 ANTISTATIC	 130°C RESISTANT SOLE	 SRC SLIP RESISTANT
--	---	---	---	--	--



SAFETY

EXCAVATOR S1

Industries:

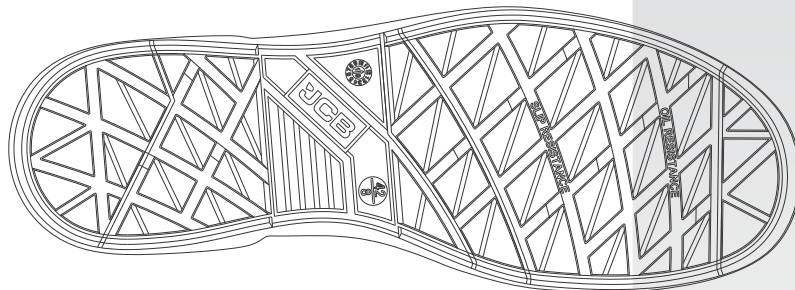
General, Engineering, Automobile, Construction

Environments:

Dry environment, Extreme slippery surfaces, Uneven surfaces, upto 130° c

Maintenance instructions:

To extend the life of your shoes, we recommend to clean them regularly and to protect them with adequate products. Do not dry your shoes on a radiator/Hair Dryer nor nearby a heat source.



Description		Measure unit	Result	IS 15298(Part 2):2016 EN ISO 20345
Upper Leather	Upper: Tear Strength	n/mm ²	262	≥ 120
	Upper: Tensile Strength	n/mm ²	26	≥ 15
	Upper: permeability to water vapor	mg/cm ² /h	1.19	≥ 0.8
	Upper: water vapor coefficient	mg/cm ²	17.6	≥ 15
Lining	3D-Mesh			
	Lining: permeability to water vapor	mg/cm ² /h	31.1	≥ 2
	Lining: water vapor coefficient	mg/cm ²	180	≥ 20
	Lining: abrasion resistance	25,600 Cycles	no hole	no hole
Footbed	Footbed			
	Footbed: abrasion resistance	cycles	450	≥ 400
Outsole	SOLE:PU PU			
	Outsole abrasion resistance (volume loss)	mm ³	91	≤ 150
	Flexing resistance (30,000 cycles)	mm	no growth	≤ 4
	Upper outsole bond strength	n/mm	4.15	≥ 4.0
	Interlayer bond strength	n/mm	4.05	≥ 4.0
	Outsole slip resistance SRA: heel	friction	0.41	≥ 0.28
	Outsole slip resistance SRA: flat	friction	0.39	≥ 0.32
	Outsole slip resistance SRB: heel	friction	0.17	≥ 0.13
	Outsole slip resistance SRB: flat	friction	0.18	≥ 0.18
	Antistatic value	MegaOhm	125	0.1 - 1000
	Heel energy absorption	Joules	≥30	≥ 20
	Resistance fuel oil	%	≤ 1.6	≤ 12
	Hot Contact at 130°C for 1 min.	Centigrade	No melt	No melt
Toecap				
	Impact resistance toecap (clearance after impact 200J)	mm	19.0	≥ 14
	Compression resistance toecap (clearance after compression 15kN)	mm	14.7	≥ 14

Our shoes are constantly evolving, the technical data above may change. All product names and brand JCB, are registered and may not to be or reproduced in any format, without written consent from us.



SAFETY FOOTWEAR

info@jcbfootwear.in
www.jcbfootwear.in

INDUSTRIAL PROFESSIONAL OCCUPATIONAL

ENGINEERED
IN UK

