



SAFETY

AGILE S1 ESD

Breathable Safety footwear

Agile is both youthful and stylish combined with first-class wearer comfort and highest slip resistance, thanks to its lightweight design, climate-optimized high-tech materials, and ergonomically designed out sole. Agile the ideal companion for the working day and beyond.

Upper	Apollo leather
Sole	Double Density PU Grey Outsole
Toecap	Composite
Midsole	PU
Lining	Mesh
Footbed	EVA Footbed
Safety category	EN ISO 20345 : 2011 & IS 15298 (Part 2): 2016
Sample weight	875 gm. +- 50g. Size 8.
Size range	UK 5-12

BUILT RELIABLE BORN TOUGH



GENERAL & UPPER

- LEATHER UPPER
- SUPER LIGHT WEIGHT
- BREATHABLE UPPER
- LACE UP
- ODOR REDUCING

TOE CAP

- COMPOSITE TOE

LINING

- WIDE TOE CAP

IN SOCK

- TEXTILE LINING
- AERATION HOLES TO REGULAR TEMPERATURE
- CUSHION HEEL & ARCH SUPPORT



SOLE

- GREY OUTSOLE
- DOUBLE DENSITY
- HEEL SHOCK
- ABSORPTION
- RESISTANT SOLE
- FUEL OIL
- ESD
- 130°C RESISTANT SOLE
- SLIP RESISTANT



SAFETY

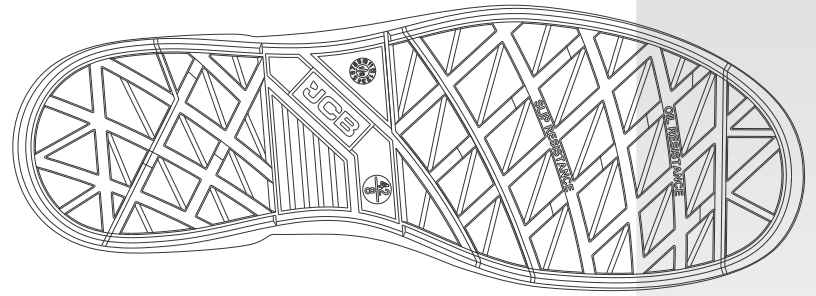
AGILE S1 ESD

Industries:
General, Engineering, Automobile, Construction

Environments:
Dry environment, Extreme slippery surfaces, Uneven surfaces, upto 130°C

Maintenance instructions:

To extend the life of your shoes, we recommend to clean them regularly and to protect them with adequate products. Do not dry your shoes on a radiator/Hair Dryer nor nearby a heat source.



Description		Measure unit	Result	IS 15298(Part 2):2016 EN ISO 20345
Upper Leather	Upper: Tear Strength	n/mm ²	262	≥ 120
	Upper: Tensile Strength	n/mm ²	26	≥ 15
	Upper: permeability to water vapor	mg/cm ² /h	1.19	≥ 0.8
	Upper: water vapor coefficient	mg/cm ²	17.6	≥ 15
Lining	3D-Mesh			
	Lining: permeability to water vapor	mg/cm ² /h	31.1	≥ 2
	Lining: water vapor coefficient	mg/cm ²	180	≥ 20
Footbed	Footbed			
	Footbed: abrasion resistance	cycles	450	≥ 400
	Outsole	SOLE:PU PU		
Outsole abrasion resistance (volume loss)		mm ³	91	≤ 150
Flexing resistance (30,000 cycles)		mm	no growth	≤ 4
Upper outsole bond strength		n/mm	4.15	≥ 4.0
Interlayer bond strength		n/mm	4.05	≥ 4.0
Outsole slip resistance SRA: heel		friction	0.41	≥ 0.28
Outsole slip resistance SRA: flat		friction	0.39	≥ 0.32
Outsole slip resistance SRB: heel		friction	0.17	≥ 0.13
Outsole slip resistance SRB: flat		friction	0.18	≥ 0.18
ESD value		MegaOhm	70	0.1 - 100
Heel energy absorption		Joules	≥30	≥ 20
Resistance fuel oil		%	≤ 1.6	≤ 12
Hot Contact at 130°C for 1 min.		Centigrade	No melt	No melt
Toecap	Impact resistance toecap (clearance after impact 200J)	mm	15.6	≥ 14
	Compression resistance toecap (clearance after compression 15kN)	mm	14.8	≥ 14

Our shoes are constantly evolving, the technical data above may change. All product names and brand JCB, are registered and may not be or reproduced in any format, without written consent from us.