



SAFETY

EXVOLT S3 EH

Breathable Leather Ankle Safety Boot

Exvolt is our iconic & stylish leather safety boot, offering very high wearer comfort & highest slip resistance, thanks to its lightweight design, tropicalized high-tech materials, and ergonomically designed out sole. Exvolt the ideal companion for the 24X7 working.

| | |
|-----------------|---|
| Upper | Apollo leather |
| Sole | Double Density PU Grey Outsole |
| Toecap | Composite |
| Insole | Penetration Resistant Textile >1100 Newton |
| Lining | Mesh |
| Footbed | PU Moulded with Memory Foam in Heel |
| Safety category | EN ISO 20345 : 2011 & IS 15298 (Part 2): 2016 |
| Sample weight | 1075 gm. +- 50g. Size 8. |
| Size range | UK 5-12 |

BORN TOUGH BUILT RELIABLE



GENERAL & UPPER



ANKLE BOOT



LEATHER UPPER



SUPER LIGHT WEIGHT



BREATHABLE UPPER



LACE UP



ODOR REDUCING



WATER RESISTANT

TOE CAP



COMPOSITE TOE



WIDE TOE CAP

LINING



TEXTILE LINING

IN SOCK



PU MOULDED SOCKS



CUSHION HEEL & ARCH SUPPORT



SOLE



GREY OUTSOLE
DOUBLE DENSITY



HEEL SHOCK
ABSORPTION



RESISTANT SOLE



ELECTRICAL
HAZARD



130°C
RESISTANT
SOLE



SLIP RESISTANT



FOOTWEAR IDEAL FOR-DUTY

CAUTION: Ensure no metal component embedded in the sole as it may reduce the electrical insulative properties.



SAFETY

EXVOLT S3 EH

Industries:

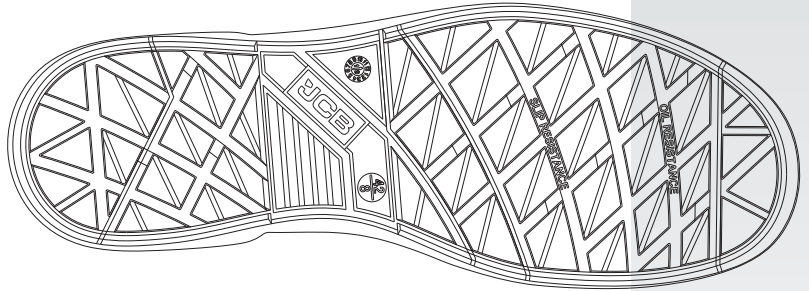
General, Engineering, Automobile, Electrician

Environments:

Dry environment, Extreme slippery surfaces, Uneven surfaces, upto 130° c

Maintenance instructions:

To extend the life of your shoes, we recommend to clean them regularly and to protect them with adequate products. Do not dry your shoes on a radiator/Hair Dryer nor nearby a heat source.



| Description | | Measure unit | Result | IS 15298(Part 2):2016 EN ISO 20345 |
|------------------|--|---------------|-------------|---------------------------------------|
| Upper Leather | Upper: Tear Strength | n/mm | 262 | ≥ 120 |
| | Upper: Tensile Strength | n/mm | 26 | ≥ 15 |
| | Water Penetration 60 Minutes | 0.0 g | 0.16 | ≤ 0.2 |
| | Water Absorption | % | 26% | ≤ 30 |
| | Upper: permeability to water vapor | mg/cm²/h | 1.19 | ≥ 0.8 |
| | Upper: water vapor coefficient | mg/cm² | 17.6 | ≥ 15 |
| Lining | 3D-Mesh | | | |
| | Lining: permeability to water vapor | mg/cm²/h | 31.1 | ≥ 2 |
| | Lining: water vapor coefficient | mg/cm² | 180 | ≥ 20 |
| | Lining: abrasion resistance | 25,600 Cycles | no hole | no hole |
| Footbed | Footbed | | | |
| | Footbed: abrasion resistance | cycles | 450 | ≥ 400 |
| Outsole | SOLE:PU PU | | | |
| | Outsole abrasion resistance (volume loss) | mm³ | 91 | ≤ 150 |
| | Flexing resistance (30,000 cycles) | mm | no growth | ≤ 4 |
| | Upper outsole bond strength | n/mm | 4.15 | ≥ 4.0 |
| | Interlayer bond strength | n/mm | 4.05 | ≥ 4.0 |
| | Outsole slip resistance *Condition A | COF | 0.60 | ≥ 0.31 |
| | Outsole slip resistance *Condition B | COF | 0.60 | ≥ 0.36 |
| | Outsole slip resistance *Condition C | COF | 0.38 | ≥ 0.19 |
| | Outsole slip resistance *Condition D | COF | 0.34 | ≥ 0.22 |
| | Electrical Insulative (ASTM 2413) | Kv | 18Kv | < 0.37 mA |
| | Heel energy absorption | Joules | ≥30 | ≥ 20 |
| | Resistance fuel oil | % | ≤ 1.6 | ≤ 12 |
| Toecap | Hot Contact at 130°C for 1 min. | Centigrade | No melt | No melt |
| | Impact resistance toecap (clearance after impact 200J) | mm | 19.0 | ≥ 14 |
| | Compression resistance toecap (clearance after compression 15kN) | mm | 14.7 | ≥ 14 |

Our shoes are constantly evolving, the technical data above may change. All product names and brand JCB, are registered and may not to be or reproduced in any format, without written consent from us.