



SAFETY

FASTRAC S1

Sporty Safety Footwear with Enhanced Wearer Comfort.

Fastrac is modern super light weight and highly flexible safety shoe. It offers outstanding wearer comfort due to virtually seam free construction, padded collar and tongue. The innovative product is perfectly adapted to the high humid Indian atmosphere for its outstanding air exchange, low weight and optimal climate control. Standing and walking in Fastrac is highly comfortable – all day long.

| | |
|-----------------|--|
| Upper | Black and Yellow High Tenacity Synthetic Fiber |
| Sole | Single Density PU, Black Outsole |
| Toecap | Steel |
| Lining | Mesh |
| Footbed | EVA Footbed |
| Safety category | EN ISO 20345 : 2011 & IS 15298 (Part 2): 2016 |
| Sample weight | 850 gm. ± 50g. Size 8. |
| Size range | UK 5-12 |
| Option | ESD, Penetration Resistance |

BUILT RELIABLE BORN TOUGH



GENERAL & UPPER

- SUPER LIGHT WEIGHT
- LACE UP
- FLYNET UPPER
- HIGHLY BREATHABLE UPPER
- VIRTUALLY SEAM FREE

- ODOR REDUCING
- FRESH SENSE
- WASHABLE UPPER

TOE CAP

- STEEL TOE

LINING

- WIDE TOE CAP

IN SOCK

- TEXTILE LINING

IN SOCK

- AERATION HOLES TO REGULAR TEMPERATURE

IN SOCK

- CUSHION HEEL & ARCH SUPPORT

SOLE

- SINGLE DENSITY

- HEEL SHOCK ABSORPTION

- RESISTANT SOLE

- ANTISTATIC

- RESISTANT SOLE

- SLIP RESISTANT

- OPTIONAL



SAFETY

FASTRAC S1

Industries:

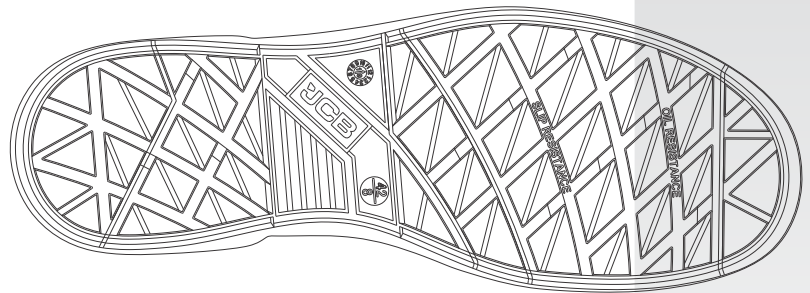
General, Engineering, Automobile, Construction

Environments:

Hot & Humid environment, Extreme slippery surfaces, Uneven surfaces, upto 130° c

Maintenance instructions:

To extend the life of your shoes, we recommend to clean them regularly and to protect them with adequate products. Do not dry your shoes on a radiator/Hair Dryer nor nearby a heat source. This is washable footwear.



| Description | | Measure unit | Result | IS 15298(Part 2):2016 EN ISO 20345 |
|--|--|-----------------------|-----------|---------------------------------------|
| Upper | Upper: Tear Strength | n/mm ² | 102 | ≥ 60 |
| | Upper: permeability to water vapor | mg/cm ² /h | 39.1 | ≥ 0.8 |
| | Upper: water vapor coefficient | mg/cm ² | 313.2 | ≥ 15 |
| Lining | 3D-Mesh | | | |
| | Lining: permeability to water vapor | mg/cm ² /h | 31.1 | ≥ 2 |
| | Lining: water vapor coefficient | mg/cm ² | 180 | ≥ 20 |
| | Lining: abrasion resistance | 25,600 Cycles | no hole | no hole |
| Footbed | Footbed | | | |
| | Footbed: abrasion resistance | cycles | 440 | ≥ 400 |
| Outsole | SOLE:PU | | | |
| | Outsole abrasion resistance (volume loss) | mm ³ | 159 | ≤ 250 |
| | Flexing resistance (30,000 cycles) | mm | no growth | ≤ 4 |
| | Upper outsole bond strength | n/mm | 4.15 | ≥ 4.0 |
| | Outsole slip resistance SRA: heel | friction | 0.41 | ≥ 0.28 |
| | Outsole slip resistance SRA: flat | friction | 0.39 | ≥ 0.32 |
| | Outsole slip resistance SRB: heel | friction | 0.17 | ≥ 0.13 |
| | Outsole slip resistance SRB: flat | friction | 0.18 | ≥ 0.18 |
| | Antistatic value | MegaOhm | 325 | 0.1 - 1000 |
| | Heel energy absorption | Joules | ≥35.5 | ≥ 20 |
| | Resistance fuel oil | % | ≤ 2.7 | ≤ 12 |
| | Hot Contact at 130°C for 1 min. | Centigrade | No melt | No melt |
| | Toecap | | | |
| Impact resistance toecap (clearance after impact 200J) | | mm | 19.0 | ≥ 14 |
| | Compression resistance toecap (clearance after compression 15kN) | mm | 14.7 | ≥ 14 |

Our shoes are constantly evolving, the technical data above may change. All product names and brand JCB, are registered and may not to be or reproduced in any format, without written consent from us.



SAFETY FOOTWEAR

FASTRAC S1

Comfort-Index

4.6/5

Comfort index is calculated using the mean value of the three index values (IV) for weight, energy absorption seat & water vapour permeability ranging from 0 (= poor) to 5 (= perfect).

ENERGY ABSORPTION SEAT 4.5

More energy absorption, more comfortable underfoot

- Test method: ISO 20344:2011, 5.13
- Test result: 35.5



WEIGHT 4.5

Lightweight feel reduces the onset of fatigue

Weight of the shoe including in-sock

- Test result:
Weight = 425 g/odd UK 8



SUPER LIGHT WEIGHT

WATER VAPOUR PERMEABILITY 4.9

Reduced perspiration for a superior foot Comfort

- Test method: ISO 20344:2011, 6.6
- Test result: 39.1 mg/(cm²h)



HIGHLY BREATHABLE



FRESH SENSE