



OCCUPATIONAL

SPEEDMAX 01

Leather Motorcycle Boot





Speedmax is sure to stock your fire. These leather boot are design to protect feet while riding motor cycling. These boot are loaded with reinforced leather shift pads, toe hand heel counter and a grippy SRC graded slip resistant direct injected double density PU sole. The closer is lateral velcro fastener. Speedmax is equipped with anatomic and replaceable in-socks.

Upper	Textured leather, Reinforced Vamp for Pedal
Sole	Double Density PU Grey Outsole
Toe	Thermoplastic Stiffener
Midsole	PU
Lining	Mesh
Footbed	EVA Footbed
Safety category	EN ISO 20347 : 2012 & IS 15298 (Part 4): 2017
Sample weight	900 gm. ± 50g. Size 8.
Size range	UK 5-12





BUILT RELIABLE BORN TOUGH



GENERAL & UPPER

 MOTORCYCLE BOOT	 ANKLE BOOT	 LEATHER UPPER	 LIGHT WEIGHT
---	---	--	---

 BREATHABLE UPPER	 VELCRO	 ODOR REDUCING
--	---	--

 TOE PUFF	 TEXTILE LINING	 AERATION HOLES TO REGULAR TEMPERATURE	 CUSHION HEEL & ARCH SUPPORT
--	---	--	--

 DOUBLE DENSITY	 HEEL SHOCK ABSORPTION	 RESISTANT SOLE	 ANTISTATIC	 RESISTANT SOLE	 SLIP RESISTANT
--	--	---	---	---	---



SAFETY FOOTWEAR

info@jcbfootwear.in
www.jcbfootwear.in

INDUSTRIAL PROFESSIONAL OCCUPATIONAL

ENGINEERED
IN UK





SAFETY

SPEEDMAX 01

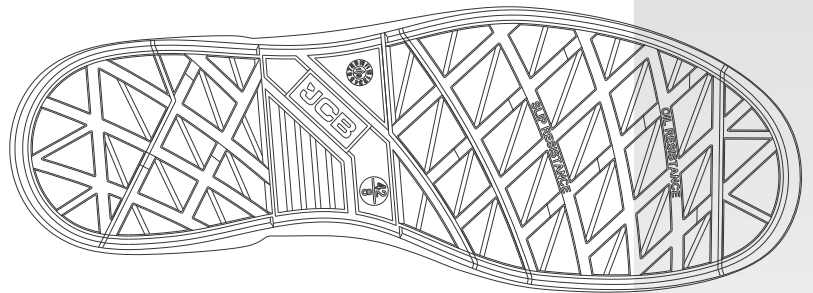
Motorcycle Ankle Boot

Environments:

Dry/Humid environment, Extreme slippery surfaces, Uneven surfaces, upto 130° c

Maintenance instructions:

To extend the life of your shoes, we recommend to clean them regularly and to protect them with adequate products. Do not dry your shoes on a radiator/Hair Dryer nor nearby a heat source.



Description		Measure unit	Result	IS 15298(Part 2):2016 EN ISO 20345
Upper Leather	Upper: Tear Strength	n/mm ²	262	≥ 120
	Upper: Tensile Strength	n/mm ²	26	≥ 15
	Upper: permeability to water vapor	mg/cm ² /h	1.19	≥ 0.8
	Upper: water vapor coefficient	mg/cm ²	17.6	≥ 15
Lining	3D-Mesh			
	Lining: permeability to water vapor	mg/cm ² /h	31.1	≥ 2
	Lining: water vapor coefficient	mg/cm ²	180	≥ 20
Footbed	Footbed			
	Footbed: abrasion resistance	cycles	450	≥ 400
	Sole	SOLE:PUPU		
Outsole abrasion resistance (volume loss)		mm ³	91	≤ 150
Flexing resistance (30,000 cycles)		mm	no growth	≤ 4
Upper outsole bond strength		n/mm	4.15	≥ 4.0
Interlayer bond strength		n/mm	4.05	≥ 4.0
Outsole slip resistance SRA: heel		friction	0.41	≥ 0.28
Outsole slip resistance SRA: flat		friction	0.39	≥ 0.32
Outsole slip resistance SRB: heel		friction	0.17	≥ 0.13
Outsole slip resistance SRB: flat		friction	0.18	≥ 0.18
Antistatic value		MegaOhm	125	0.1 - 1000
Heel energy absorption		Joules	≥30	≥ 20
Resistance fuel oil		%	≤ 1.6	≤ 12
Hot Contact at 130°C for 1 min.		Centigrade	No melt	No melt

Our shoes are constantly evolving, the technical data above may change. All product names and brand JCB, are registered and may not to be or reproduced in any format, without written consent from us.