



SAFETY

TREKKER S1

Breathable Leather Ankle Safety Boot

Trekker is our iconic & stylish leather safety boot, offering very high wearer comfort, high breath ability, highest slip resistance. Thanks to its lightweight design incorporating tropicalized high-tech materials, and ergonomically designed out sole. Trekker the ideal companion for the 24X7 working.

Upper	Beige Nubuck leather
Sole	Double Density PU Grey Outsole
Toecap	Steel
Midsole	PU
Lining	Two Colour Mesh
Footbed	EVA Footbed
Safety category	EN ISO 20345:2011 & IS 15298 (Part 2): 2016
Sample weight	925 gm. ± 50g. Size 8.
Size range	UK 5-12

BUILT RELIABLE BORN TOUGH



GENERAL & UPPER

DESIGN "B" ANKLE BOOT	NUBUCK LEATHER UPPER	LIGHT WEIGHT	BREATHABLE UPPER	LACE UP	ODOR REDUCING
--------------------------	-------------------------	--------------	------------------	---------	---------------

TOE CAP

 ST 200J
STEEL TOE

WIDE TOE CAP

LINING

TEXTILE LINING

IN SOCK

AERATION HOLES TO REGULAR TEMPERATURE

CUSHION HEEL & ARCH SUPPORT



SOLE

 PU PU GREY OUTSOLE
DOUBLE DENSITY

 35J
HEEL SHOCK ABSORPTION

 FUEL OIL
RESISTANT SOLE

ANTISTATIC

 130°C
RESISTANT SOLE

 SRC
SLIP RESISTANT



SAFETY

TREKKER S1

Industries:

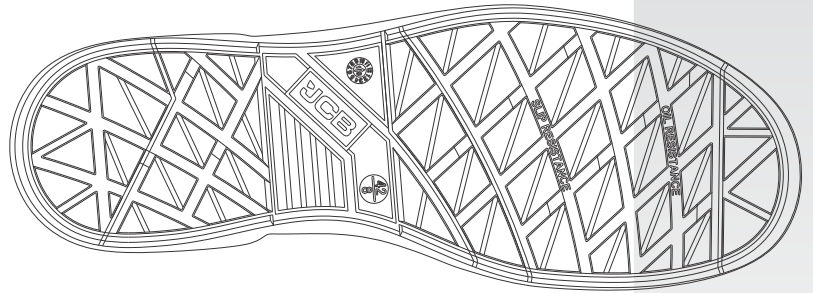
General, Engineering, Automobile, Construction

Environments:

Dry environment, Extreme slippery surfaces, Uneven surfaces, upto 130° c

Maintenance instructions:

To extend the life of your shoes, we recommend to clean them regularly and to protect them with adequate products. Do not dry your shoes on a radiator/Hair Dryer nor nearby a heat source.



Description		Measure unit	Result	IS 15298(Part 2):2016 EN ISO 20345
Upper Leather	Upper: Tear Strength	n/mm ²	262	≥ 120
	Upper: Tensile Strength	n/mm ²	26	≥ 15
	Upper: permeability to water vapor	mg/cm ² /h	1.6	≥ 0.8
	Upper: water vapor coefficient	mg/cm ²	19.6	≥ 15
Lining	3D-Mesh			
	Lining: permeability to water vapor	mg/cm ² /h	31.1	≥ 2
	Lining: water vapor coefficient	mg/cm ²	180	≥ 20
Footbed	Footbed			
	Lining: abrasion resistance	25,600 Cycles	no hole	no hole
	Footbed: abrasion resistance	cycles	450	≥ 400
Outsole	SOLE:PU PU			
	Outsole abrasion resistance (volume loss)	mm ³	91	≤ 150
	Flexing resistance (30,000 cycles)	mm	no growth	≤ 4
	Upper outsole bond strength	n/mm	4.15	≥ 4.0
	Interlayer bond strength	n/mm	4.05	≥ 4.0
	Outsole slip resistance SRA: heel	friction	0.41	≥ 0.28
	Outsole slip resistance SRA: flat	friction	0.39	≥ 0.32
	Outsole slip resistance SRB: heel	friction	0.17	≥ 0.13
	Outsole slip resistance SRB: flat	friction	0.18	≥ 0.18
	Antistatic value	MegaOhm	125	0.1 - 1000
	Heel energy absorption	Joules	≥30	≥ 20
	Resistance fuel oil	%	≤ 1.6	≤ 12
	Hot Contact at 130°C for 1 min.	Centigrade	No melt	No melt
	Toecap	Impact resistance toecap (clearance after impact 200J)	mm	19.0
Compression resistance toecap (clearance after compression 15kN)		mm	14.7	≥ 14

Our shoes are constantly evolving, the technical data above may change. All product names and brand JCB, are registered and may not to be or reproduced in any format, without written consent from us.



SAFETY FOOTWEAR

info@jcbfootwear.in
www.jcbfootwear.in

INDUSTRIAL PROFESSIONAL OCCUPATIONAL

ENGINEERED
IN UK

