



SAFETY

EXVOLT EH

Breathable Leather Ankle Safety Boot

Exvolt is our iconic & stylish leather safety boot, offering very high wearer comfort & highest slip resistance, thanks to its lightweight design, tropicalized high-tech materials, and ergonomically designed out sole. Exvolt the ideal companion for the 24X7 working.

Upper	Apollo leather
Sole	Double Density PU Grey Outsole
Toecap	Composite
Midsole	PU
Lining	Mesh
Footbed	EVA Footbed
Safety category	EN ISO 20345 : 2011 & IS 15298 (Part 2): 2016
Sample weight	975 gm. +- 50g. Size 8.
Size range	UK 5-12

BORN TOUGH BUILT RELIABLE



GENERAL & UPPER



ANKLE BOOT



LEATHER UPPER



SUPER LIGHT WEIGHT



BREATHABLE UPPER



LACE UP



ODOR REDUCING

TOE CAP



COMPOSITE TOE



WIDE TOE CAP

LINING



TEXTILE LINING

IN SOCK



AERATION HOLES TO REGULAR TEMPERATURE



CUSHION HEEL & ARCH SUPPORT

SOLE



GREY OUTSOLE
DOUBLE DENSITY



HEEL SHOCK
ABSORPTION



RESISTANT SOLE



ELECTRICAL
HAZARD



RESISTANT
SOLE



SLIP RESISTANT

CAUTION: Ensure no metal component embedded in the sole as it may reduce the electrical insulative properties.



VIEW
TESTING VIDEO



SAFETY

EXVOLT EH

Industries:

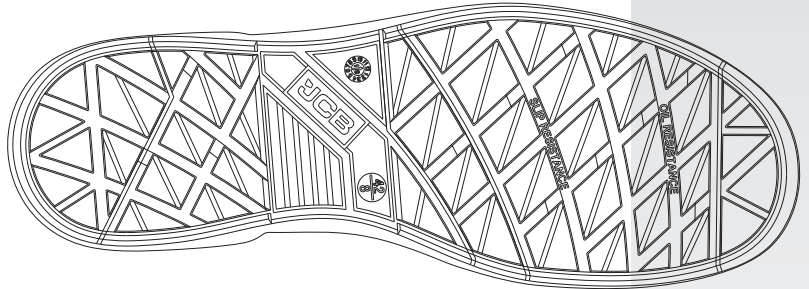
General, Engineering, Automobile, Electrician

Environments:

Dry environment, Extreme slippery surfaces, Uneven surfaces, upto 130° c

Maintenance instructions:

To extend the life of your shoes, we recommend to clean them regularly and to protect them with adequate products. Do not dry your shoes on a radiator/Hair Dryer nor nearby a heat source.



Description		Measure unit	Result	IS 15298(Part 2):2016 EN ISO 20345
Upper Leather	Upper: Tear Strength	n/mm ²	262	≥ 120
	Upper: Tensile Strength	n/mm ²	26	≥ 15
	Upper: permeability to water vapor	mg/cm ² /h	1.19	≥ 0.8
	Upper: water vapor coefficient	mg/cm ²	17.6	≥ 15
Lining	3D-Mesh			
	Lining: permeability to water vapor	mg/cm ² /h	31.1	≥ 2
	Lining: water vapor coefficient	mg/cm ²	180	≥ 20
	Lining: abrasion resistance	25,600 Cycles	no hole	no hole
Footbed	Footbed			
	Footbed: abrasion resistance	cycles	450	≥ 400
Outsole	SOLE:PU PU			
	Outsole abrasion resistance (volume loss)	mm ³	91	≤ 150
	Flexing resistance (30,000 cycles)	mm	no growth	≤ 4
	Upper outsole bond strength	n/mm	4.15	≥ 4.0
	Interlayer bond strength	n/mm	4.05	≥ 4.0
	Outsole slip resistance SRA: heel	friction	0.41	≥ 0.28
	Outsole slip resistance SRA: flat	friction	0.39	≥ 0.32
	Outsole slip resistance SRB: heel	friction	0.17	≥ 0.13
	Outsole slip resistance SRB: flat	friction	0.18	≥ 0.18
	Electrical Resistance (ASTM)	KV	16	≥ 15
	Heel energy absorption	Joules	≥30	≥ 20
	Resistance fuel oil	%	≤ 1.6	≤ 12
	Hot Contact at 130°C for 1 min.	Centigrade	No melt	No melt
Toecap				
	Impact resistance toecap (clearance after impact 200J)	mm	19.0	≥ 14
	Compression resistance toecap (clearance after compression 15kN)	mm	14.7	≥ 14

Our shoes are constantly evolving, the technical data above may change. All product names and brand JCB, are registered and may not to be or reproduced in any format, without written consent from us.