



SAFETY

SWIFT

Sporty Safety Footwear with Enhanced Wearer Comfort.

Swift is morden super light weight and highly flexible safety shoe. it offers out standing wearer comfort due to unique upper material, padded collar & tongue. The innovative product is perfectly adapted to the high humid Indian atmosphere for its outstanding air exchange, low weight and optimal climate control. Standing and walking in Swift is highly comfortable – 24x7.

| | |
|-----------------|---|
| Upper | Black Suede Leather & High Tenacity Synthetic Textile |
| Sole | Double Density PU, Gray Outsole |
| Toecap | Steel |
| Lining | Mesh |
| Footbed | EVA Footbed |
| Safety category | EN ISO 20345 : 2011 & IS 15298 (Part 2): 2016 |
| Sample weight | 850 gm. ± 50g. Size 8. |
| Size range | UK 5-12 |
| Option | ESD, Penetration Resistance |

GENERAL & UPPER



LIGHT WEIGHT



LACE UP



HIGHLY
BREATHABLE
UPPER



VIRTUALLY SEAM
FREE



ODOR REDUCING



TOE CAP



STEEL TOE



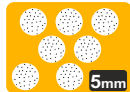
WIDE TOE CAP

LINING



TEXTILE LINING

IN SOCK



AERATION PIN HOLES
TO REGULAR
TEMPERATURE



CUSHION HEEL &
ARCH SUPPORT

SOLE



GREY OUTSOLE
DOUBLE DENSITY



HEEL SHOCK
ABSORPTION



RESISTANT SOLE



ANTISTATIC



RESISTANT
SOLE



SLIP RESISTANT



SAFETY FOOTWEAR

info@jcbfootwear.in

www.jcbfootwear.in

INDUSTRIAL PROFESSIONAL OCCUPATIONAL

ENGINEERED
IN UK





SAFETY

SWIFT

Industries:

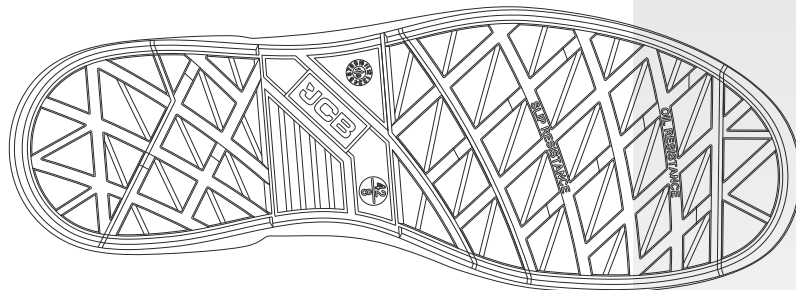
General, Engineering, Automobile, Construction

Environments:

Hot & Humid environment, Extreme slippery surfaces,
Uneven surfaces, upto 130° c

Maintenance instructions:

To extend the life of your shoes, we recommend to clean them regularly and to protect them with adequate products. Do not dry your shoes on a radiator/Hair Dryer nor nearby a heat source. This is washable footwear.



| Description | | Measure unit | Result | IS 15298(Part 2):2016 EN ISO 20345 |
|-------------|--|-----------------------|-----------|---------------------------------------|
| Upper | Upper: Tear Strength | n/mm ² | 102 | ≥ 60 |
| | Upper: permeability to water vapor | mg/cm ² /h | 39.1 | ≥ 0.8 |
| | Upper: water vapor coefficient | mg/cm ² | 313.2 | ≥ 15 |
| Lining | 3D-Mesh | | | |
| | Lining: permeability to water vapor | mg/cm ² /h | 31.1 | ≥ 2 |
| | Lining: water vapor coefficient | mg/cm ² | 180 | ≥ 20 |
| | Lining: abrasion resistance | 25,600 Cycles | no hole | no hole |
| Footbed | Footbed | | | |
| | Footbed: abrasion resistance | cycles | 440 | ≥ 400 |
| Outsole | SOLE:PU PU | | | |
| | Outsole abrasion resistance (volume loss) | mm ³ | 78 | ≤ 150 |
| | Flexing resistance (30,000 cycles) | mm | no growth | ≤ 4 |
| | Upper outsole bond strength | n/mm | 4.15 | ≥ 4.0 |
| | NEW Outsole slip resistance *Condition A | COF | 0.60 | ≥ 0.31 |
| | | COF | 0.60 | ≥ 0.36 |
| | | COF | 0.38 | ≥ 0.19 |
| | | COF | 0.34 | ≥ 0.22 |
| | Antistatic value | MegaOhm | 325 | 0.1 - 1000 |
| | Heel energy absorption | Joules | ≥35.5 | ≥ 20 |
| | Resistance fuel oil | % | ≤ 2.7 | ≤ 12 |
| Toecap | Hot Contact at 130°C for 1 min. | Centigrade | No melt | No melt |
| | Impact resistance toecap (clearance after impact 200J) | mm | 19.0 | ≥ 14 |
| | Compression resistance toecap (clearance after compression 15kN) | mm | 14.7 | ≥ 14 |

Our shoes are constantly evolving, the technical data above may change. All product names and brand JCB, are registered and may not to be or reproduced in any format, without written consent from us.